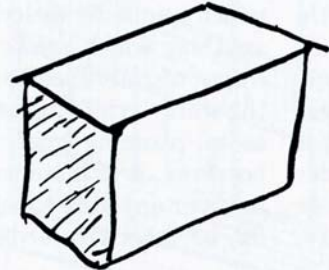
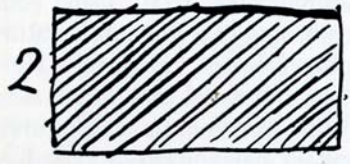
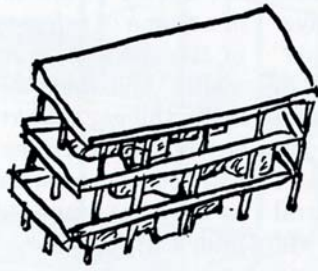
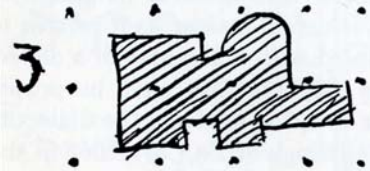


autorisé composite
programmable

genre plutôt facile,
pittoresque
mouvementé
On peut conjuguer la
discipline plus classique
et hiérarchie

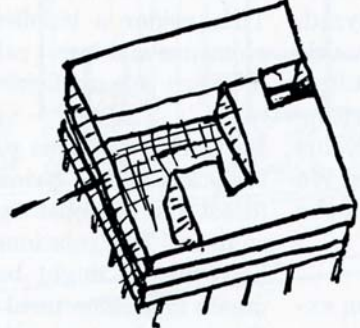
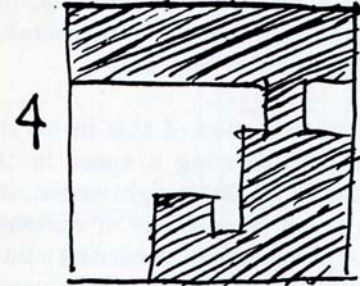


très difficile
(satisfaction de l'esprit)

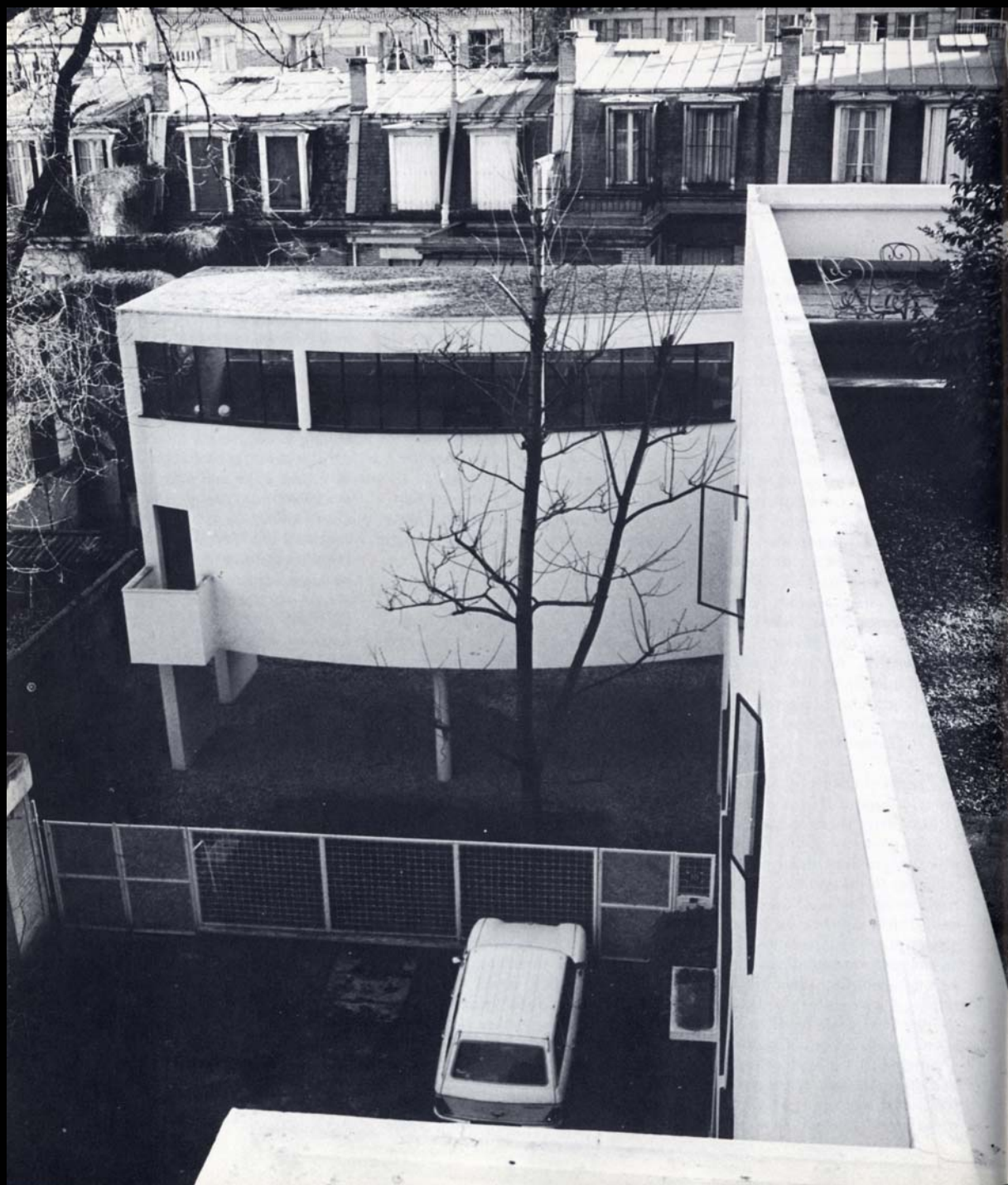


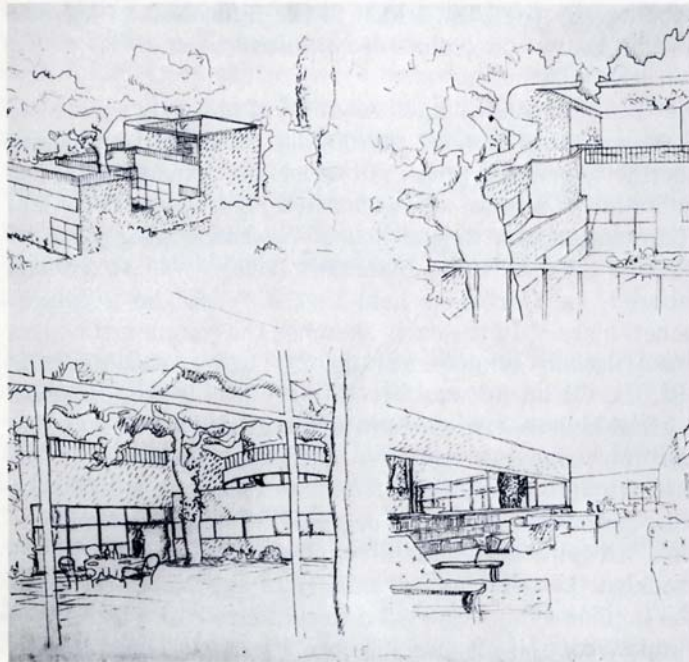
compréhension architecturale
(niveau pur)

très facile,
matériau
combinable

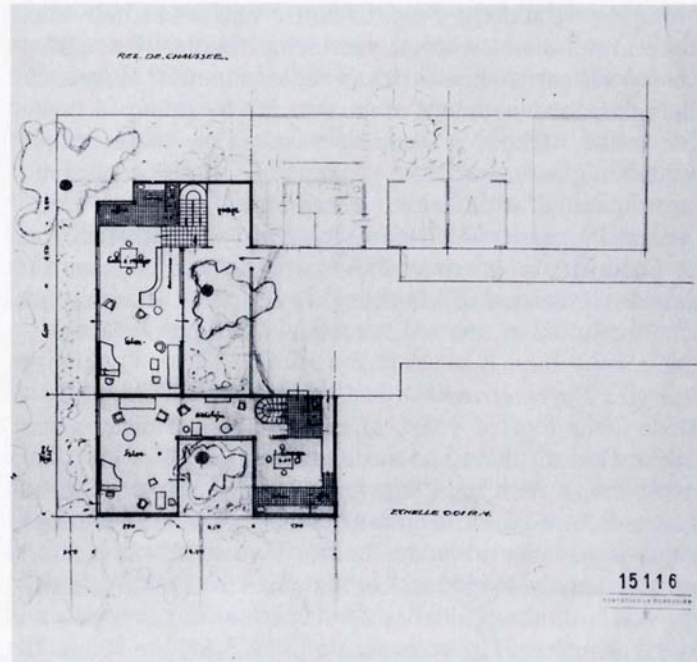


très généreux
on affirme à l'extérieur
une volonté architecturale,
on satisfait à l'intérieur
à tous les besoins fonctionnels
(ventilation, acoustiques,
circulation).

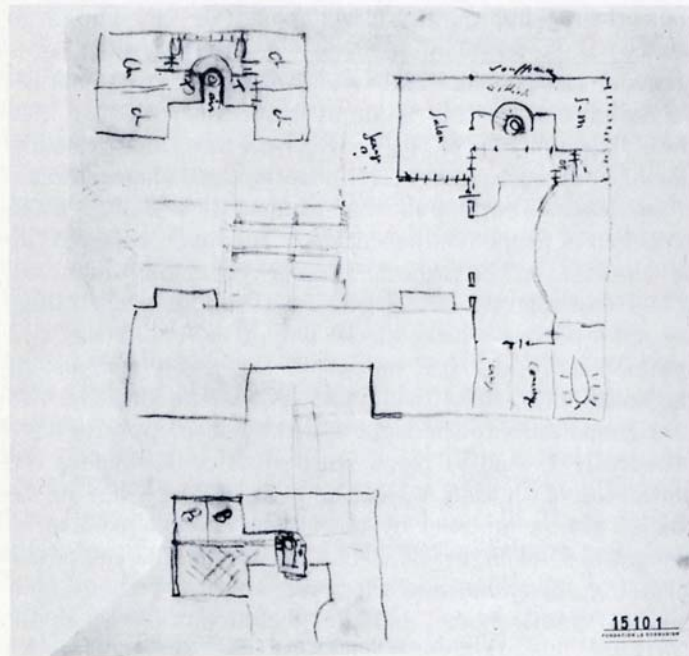




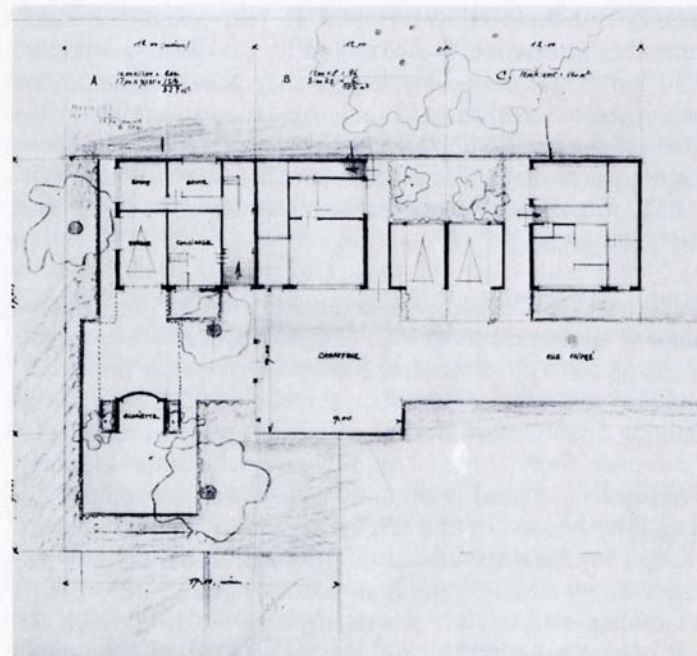
2



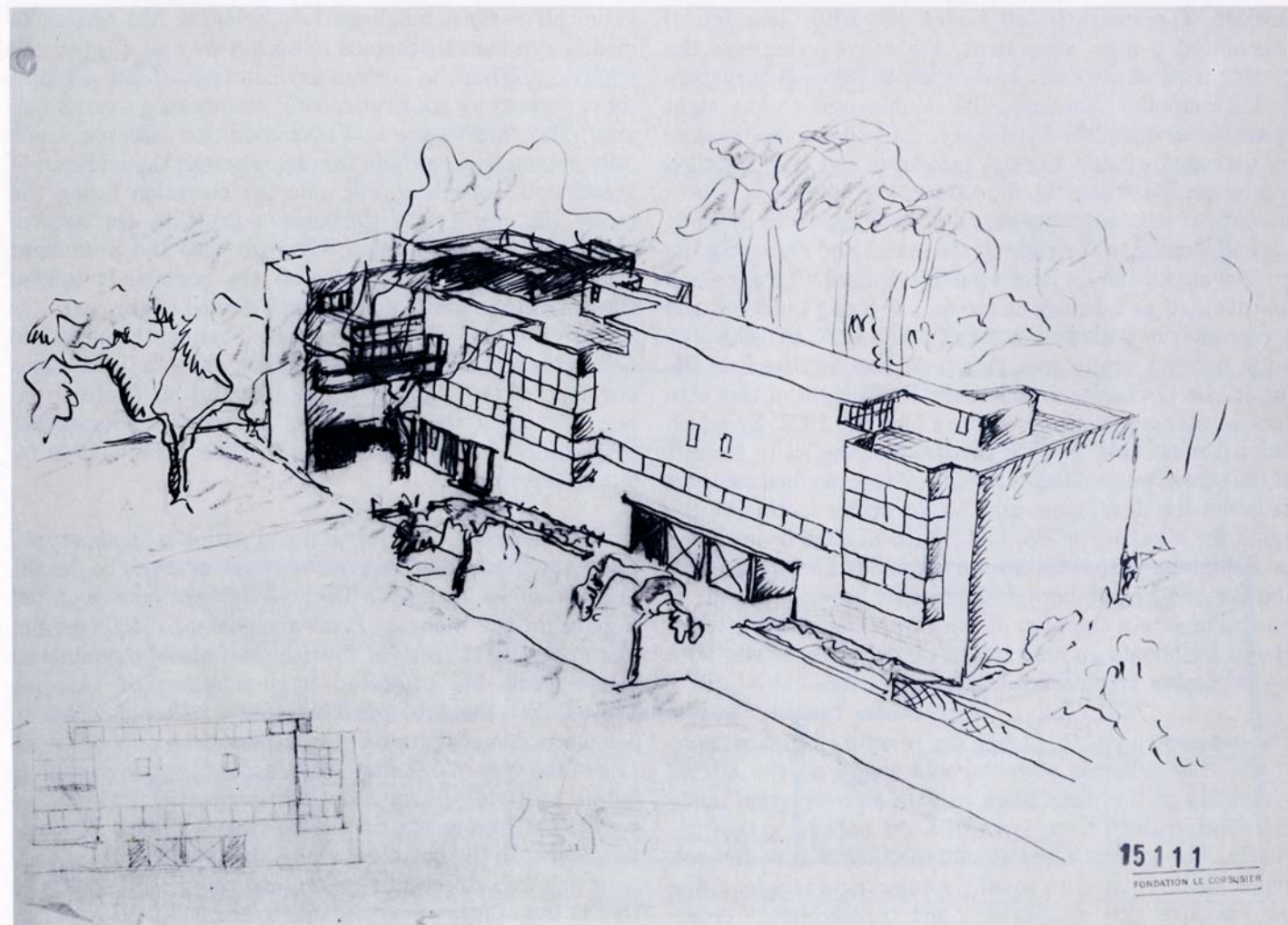
3



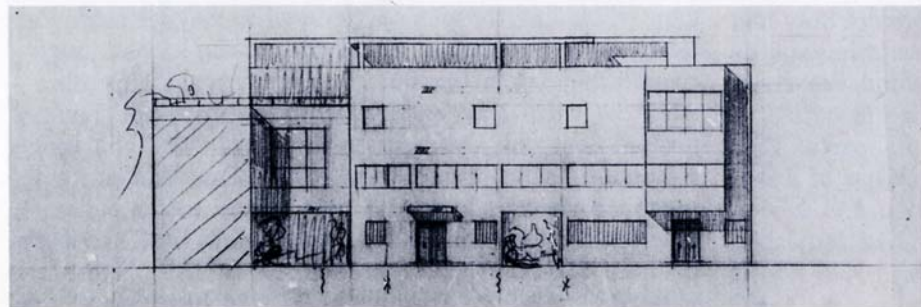
4



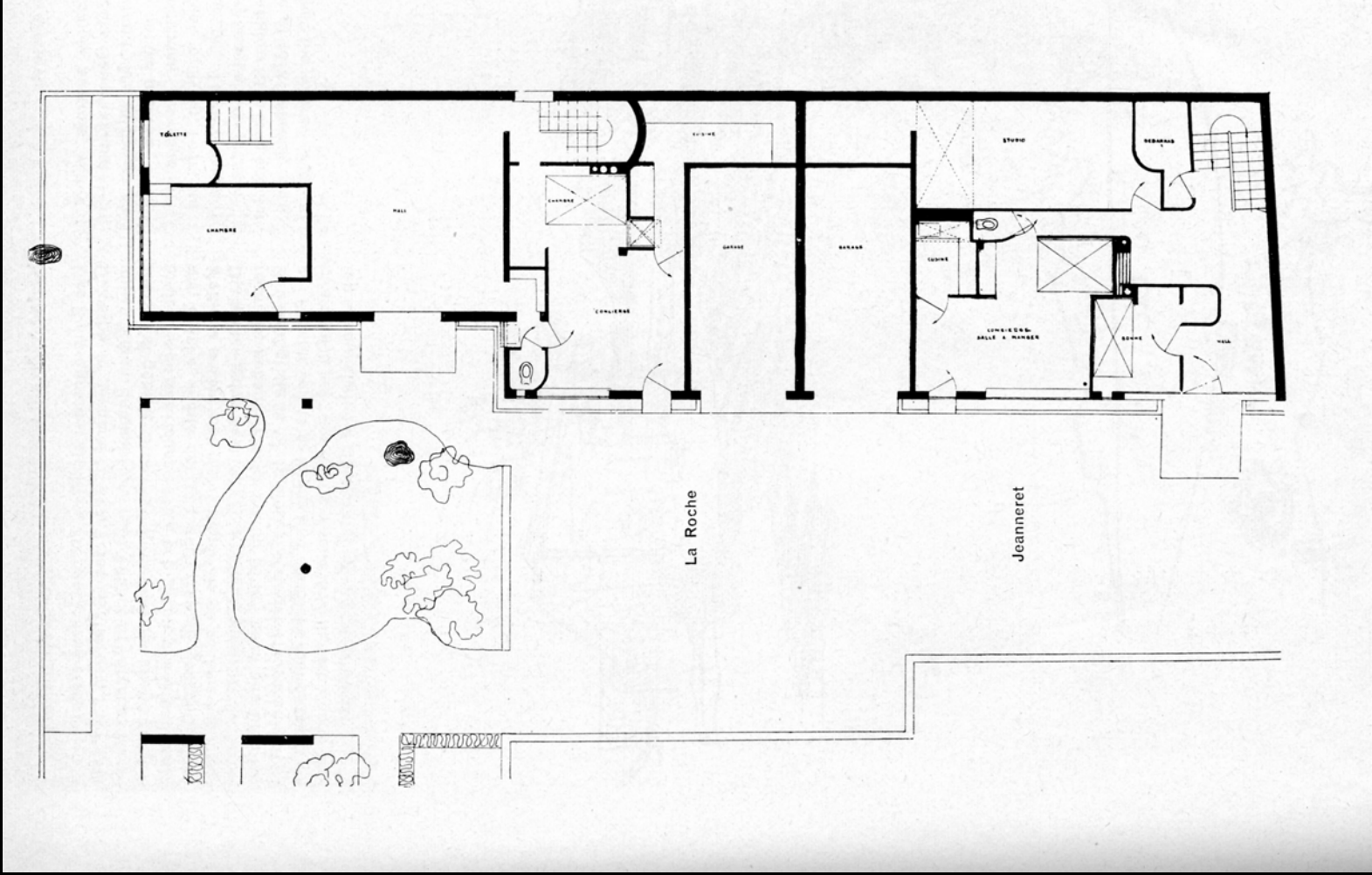
5



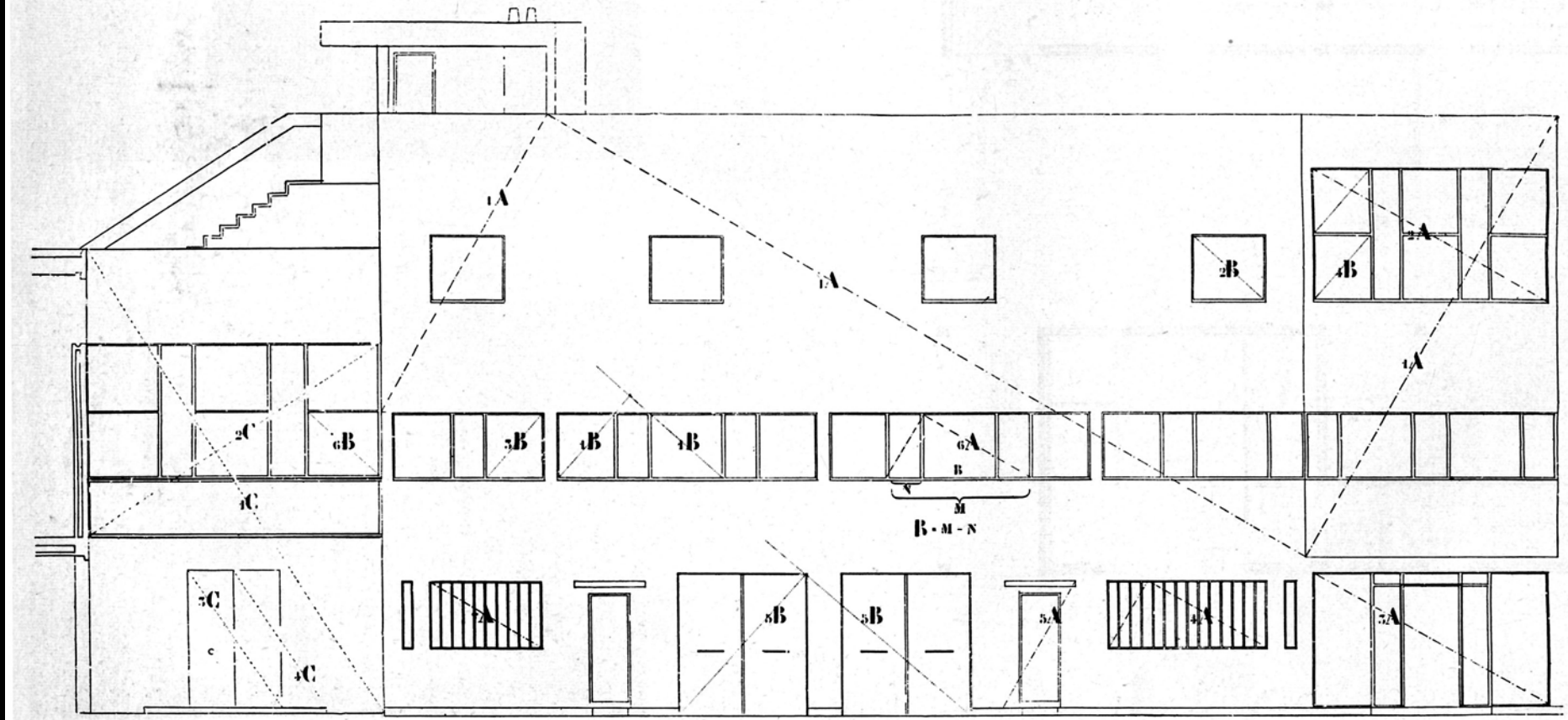
6



7

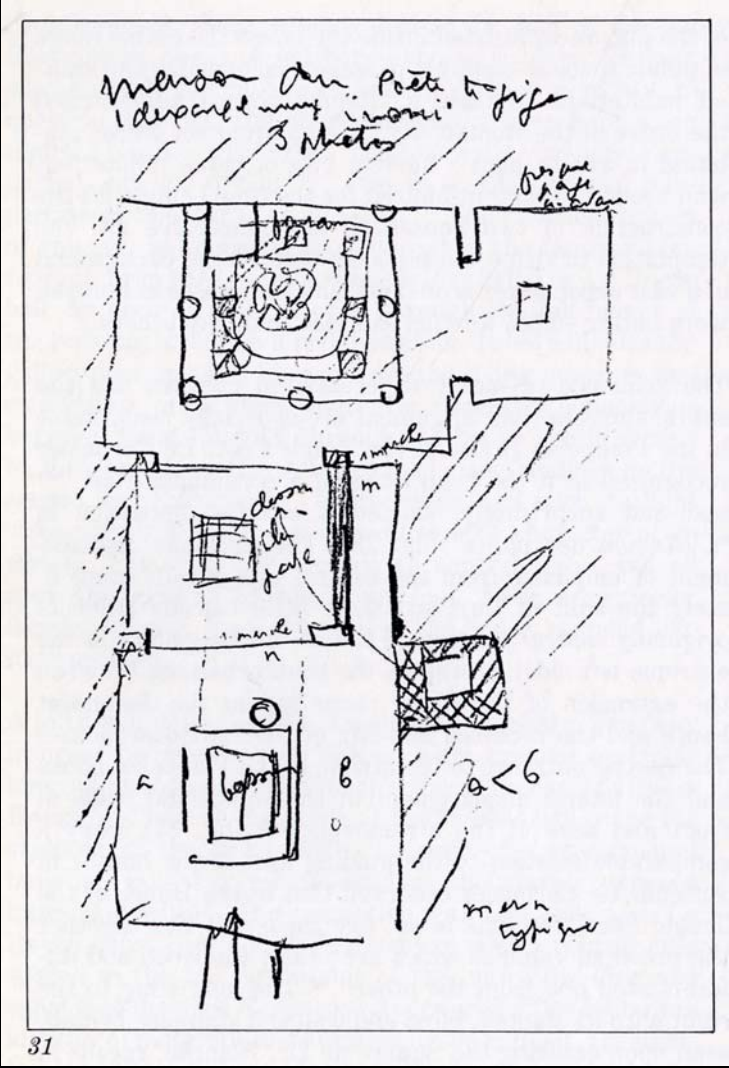


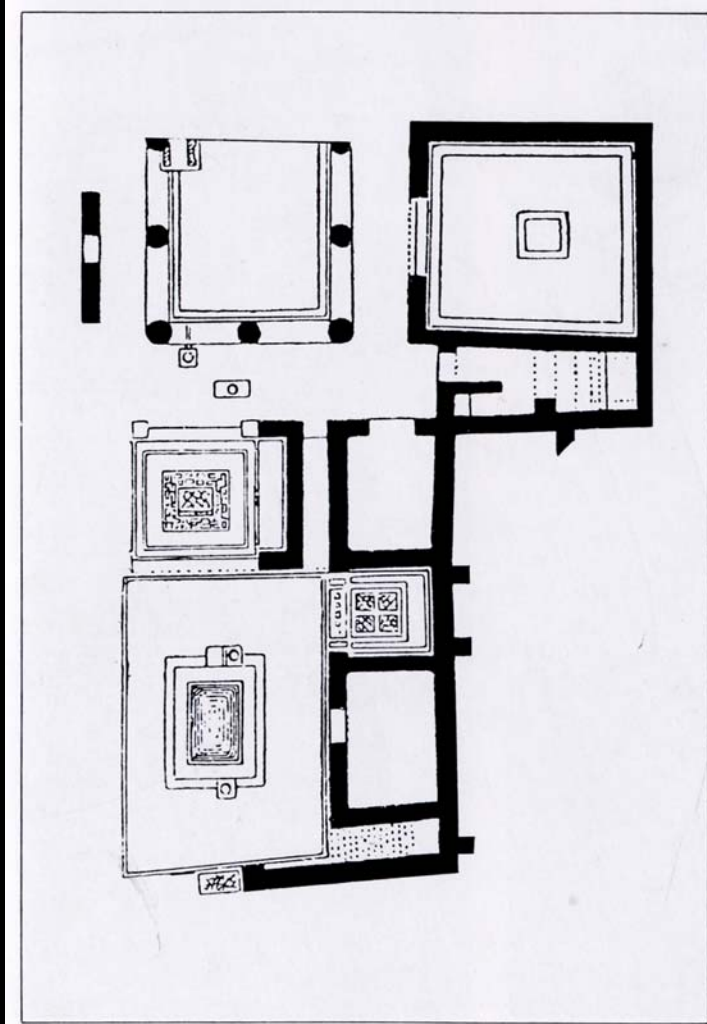




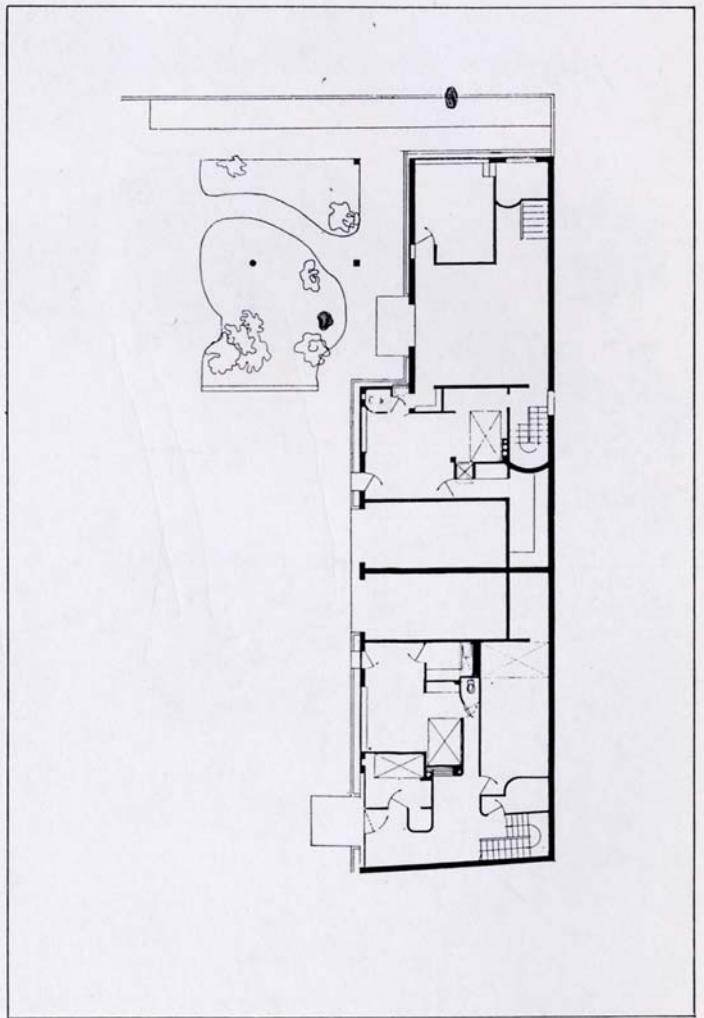








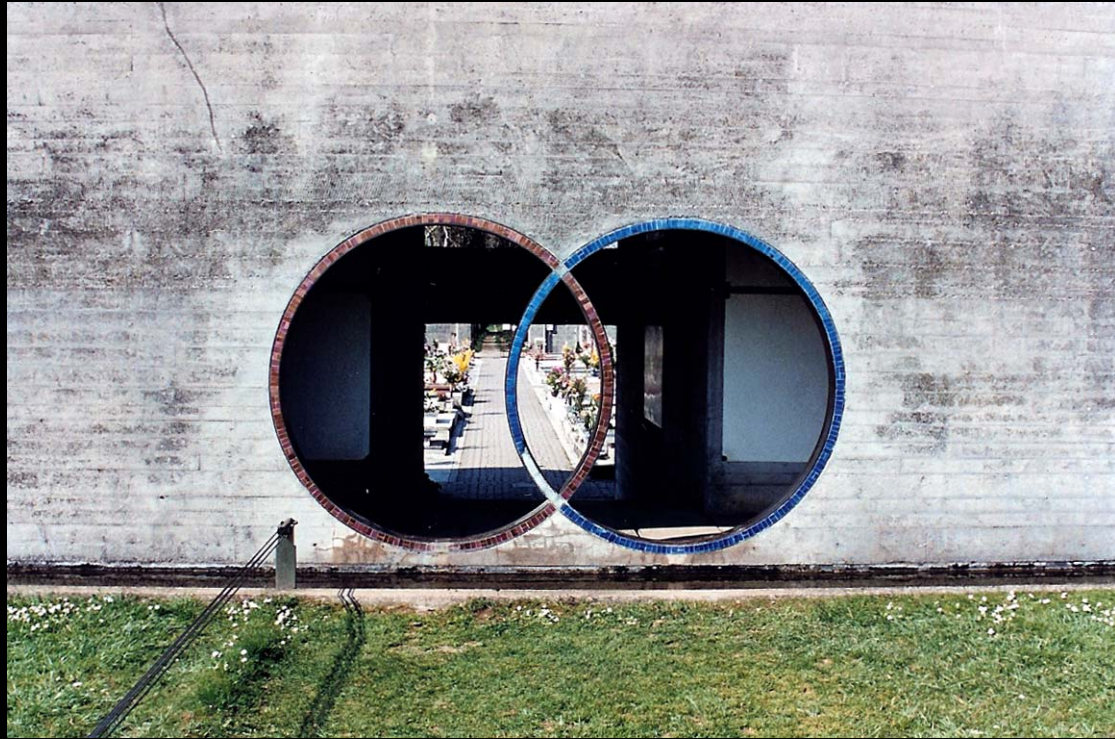
32

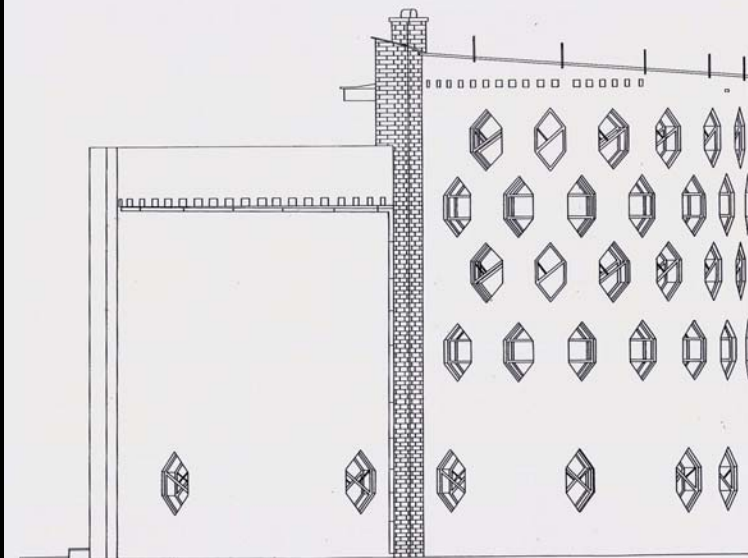
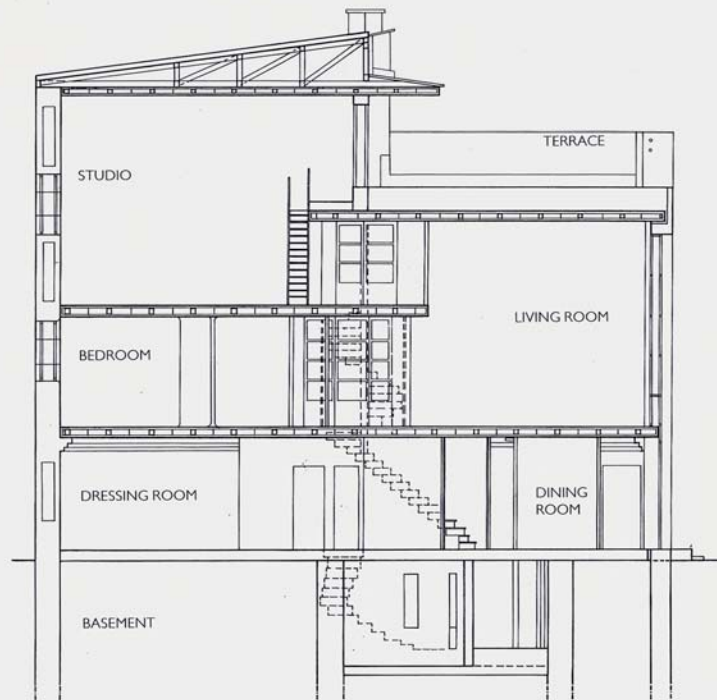
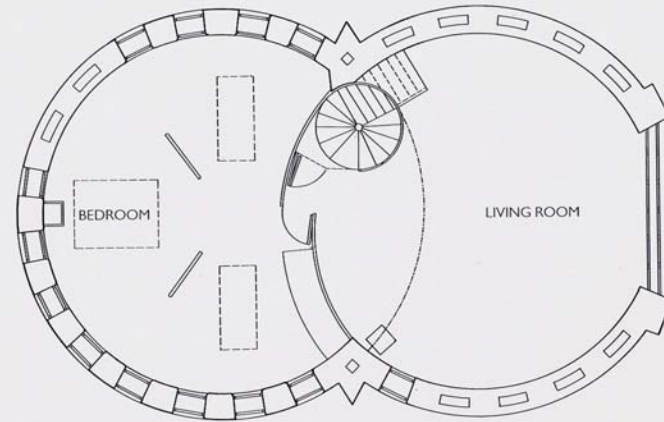
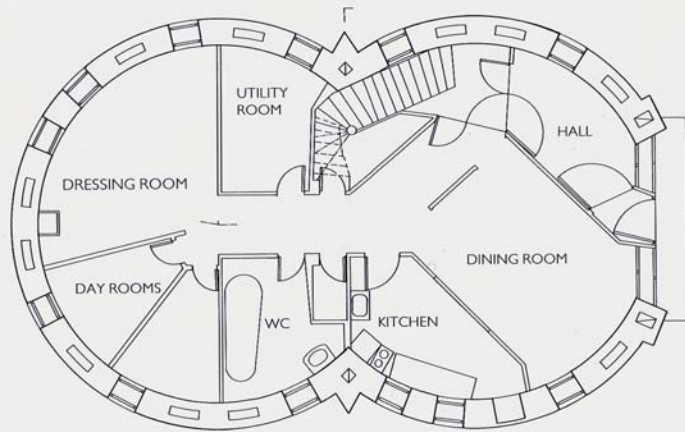


33

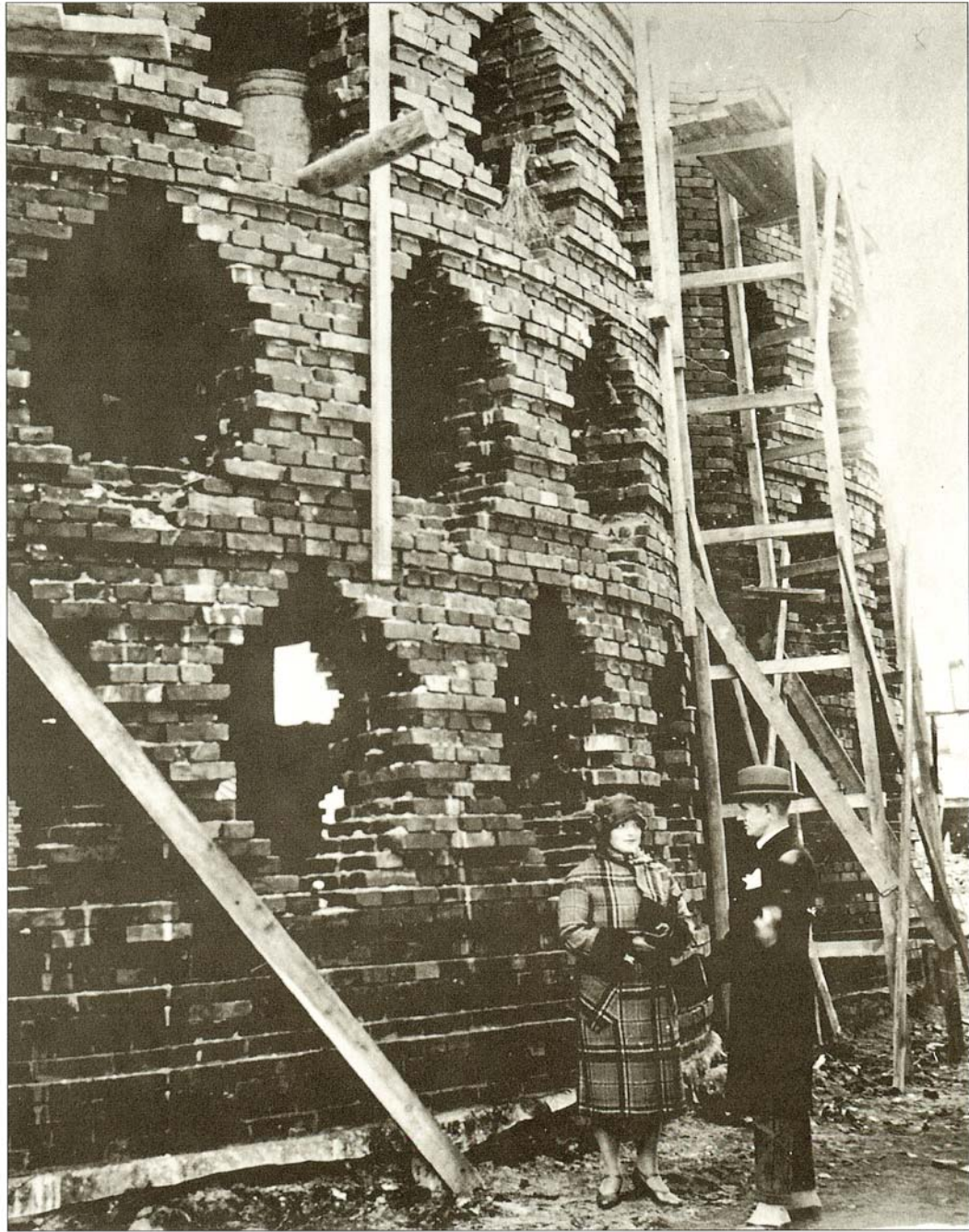


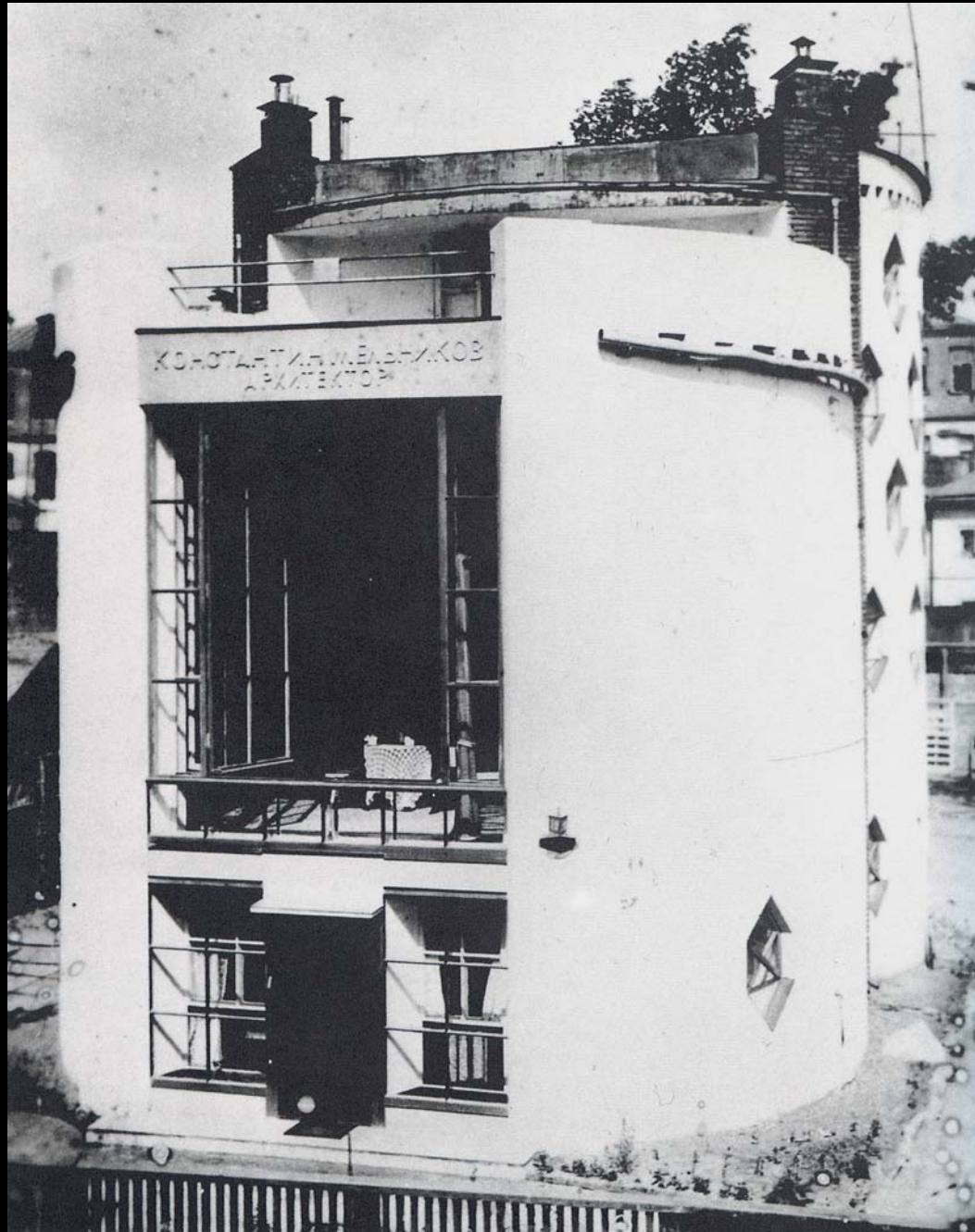


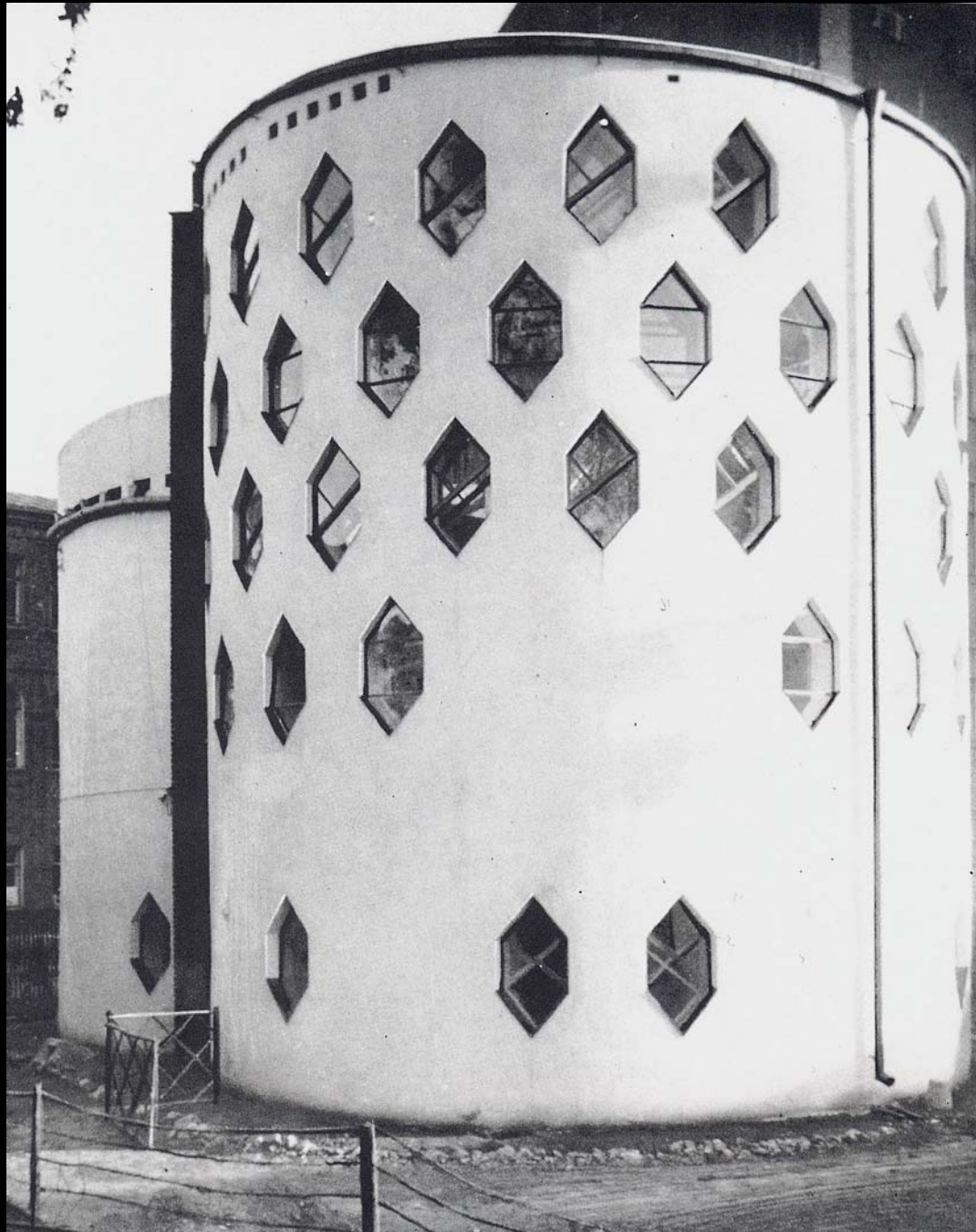




ABOVE: Ground floor plan; BELOW: Long section









FROM ABOVE: Paintings of the bedroom by Konstantin Melnikov (1930s); and Viktor Melnikov (1932)

